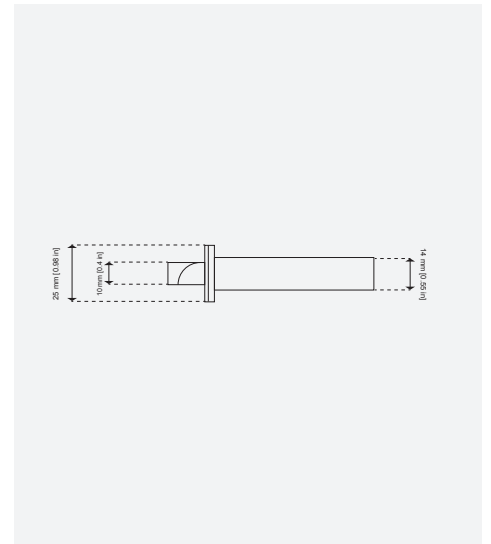
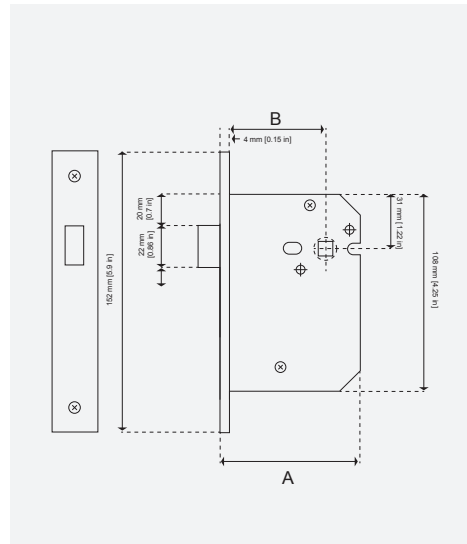
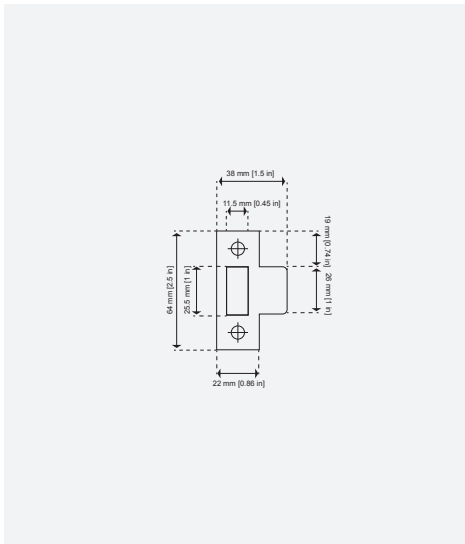
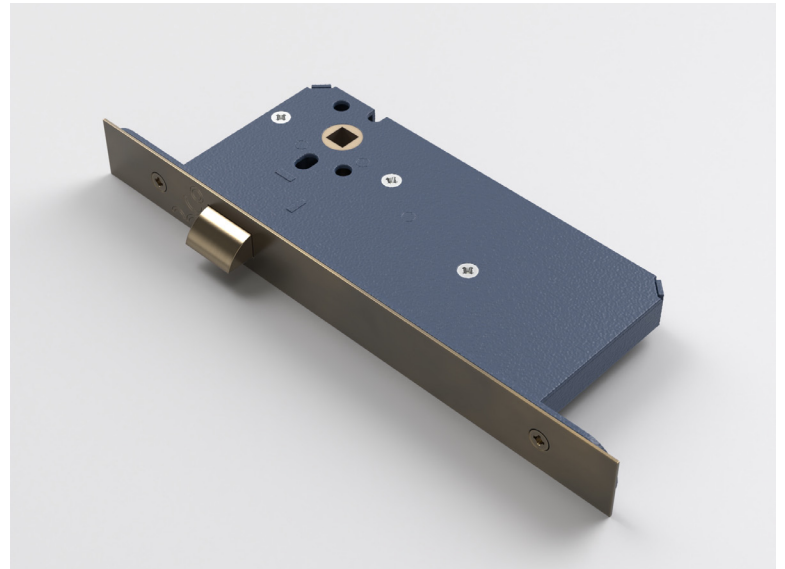




Mortise Passage Latch

DDA compliant passage mortise latch for use on internal wooden hinged doors. CE Marked door lock
Fire rated to BS EN 1634-1:2000 & Performance rated to BS EN 12209. Latch bolt is operated by lever handle from either side. Supplied with striker plate and fixing screws. Available in all Björn Collection signature finishes.



Please note this drawing is the confidential property of Björn Collection and must not be copied or disclosed to any third party without written permission.